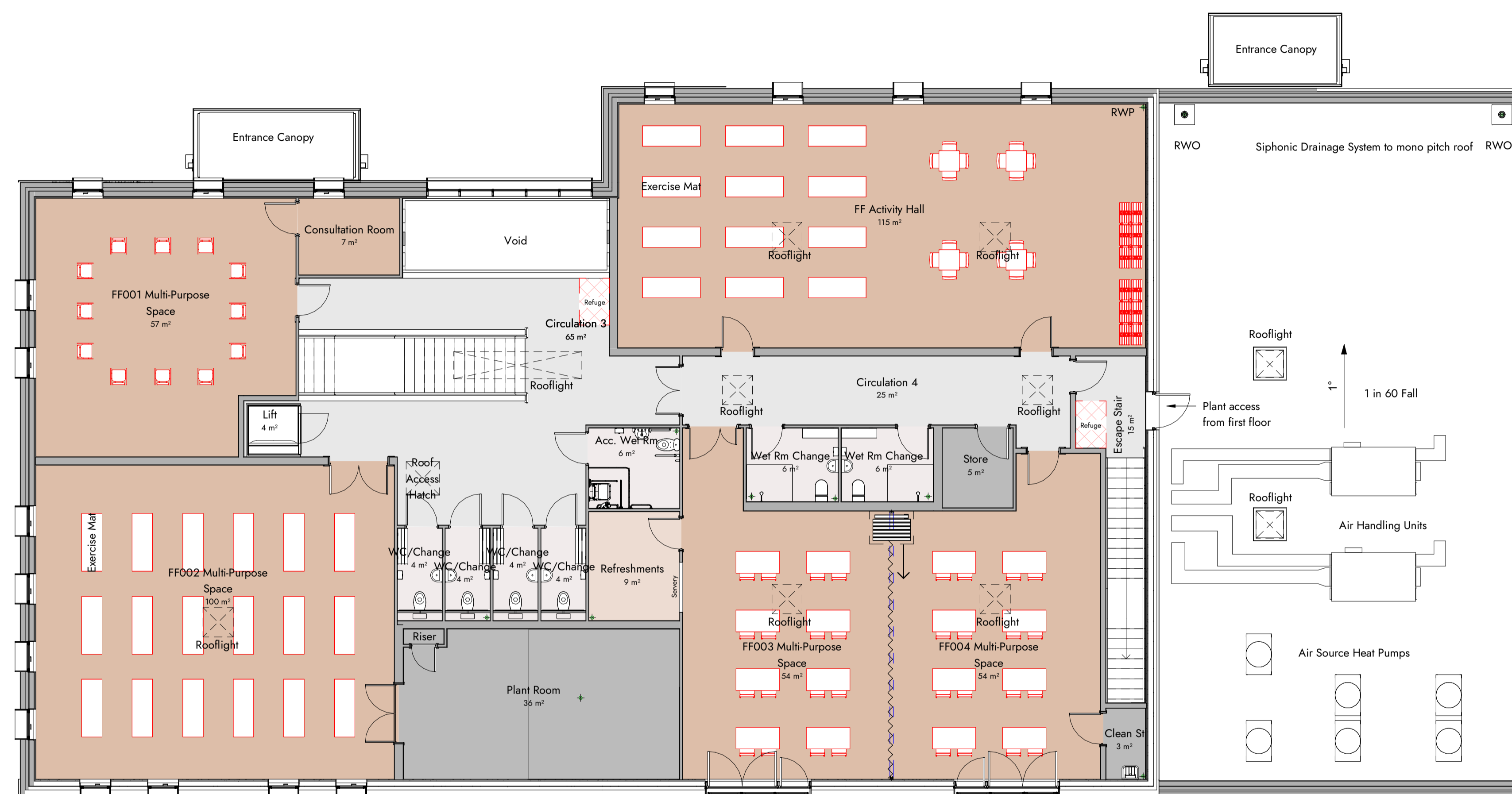


- NOTES**
- Do not scale from this drawing.
 - All measurements are in millimetres unless stated otherwise.
 - This drawing is to be read in conjunction with the contract documentation, specification and all relevant Architectural, Electrical, Mechanical, Landscape and Structural drawings.
 - Any discrepancies between documents to be reported to the architectural team for review and clarification, prior to works commencing on site.
 - All coordinates and dimensions to be checked and confirmed on site, prior to works commencing.
 - Lungfish drawings are provided as design intent. The detail shown is demonstrative of principle; all components, fixings and seals etc are to be provided and installed to the satisfaction of each relevant manufacturer's recommendations to maintain thermal, air and fire resistances where applicable.
- The information on this drawing is subject to the final coordination of structure/sub-structure, M&E

HEALTH AND SAFETY RISKS:

We have reviewed health and safety risks associated with works associated with the content of this drawing and we do not believe there residual risks that a competent contractor would be aware of.



First Floor Room Schedule

Name	Area
Acc. Wet Rm	6 m ²
Circulation 3	65 m ²
Circulation 4	25 m ²
Clean St	3 m ²
Consultation Room	7 m ²
Escape Stair	15 m ²
FF001 Multi-Purpose Space	57 m ²
FF002 Multi-Purpose Space	100 m ²
FF003 Multi-Purpose Space	54 m ²
FF004 Multi-Purpose Space	54 m ²
FF Activity Hall	115 m ²
Plant Room	36 m ²
Refreshments	9 m ²
Riser	1 m ²
Store	5 m ²
WC/Change	4 m ²
WC/Change	4 m ²
WC/Change	4 m ²
WC/Change	4 m ²
Wet Rm Change	6 m ²
Wet Rm Change	6 m ²
	578 m ²

First Floor Plan

1 : 100

Room Function

- Ancillary
- Cafe/Function Room
- Circulation
- Community Fitness/Sports
- WC/Change

GIFA Schedule

Name	Area
GIFA Ground Floor	847 m ²
GIFA First Floor	605 m ²
	1451 m ²

Note: furniture, fixtures and equipment is shown to indicate scale of space and for illustrative purposes only - furniture to be provided by Operator

- Furniture Key**
- Fixed furniture included in scope of works.
 - Loose furniture shown for context. Not part of works.

Rev	Description	Date	Drn.	Chk.
P11	Latest GAs for Client Sign-off.	14.10.24	rem	
P10	Initial Stage 5 Issue Capturing VE Items.	12.07.24	var	rem
P09	Stage 4 update	27.10.23	JD	rem
P08	Roof mounted MEP Plant added	18.10.23	JD	rem
P07	Stage 4 update	13.10.23	JD	rem
P06	Stage 4 issue	29.09.23	var	rem
P05	Stage 3 sign-off issue	11.08.23	OS	rem

CLIENT

Broxtowe Borough Council
Council Offices, Foster Avenue,
Beeston, Nottingham NG9 1AB

CONTRACTOR

Atkins Realis
City Gate East Tollhouse Hill,
Tollhouse Hill,
Nottingham NG1 5FS

PROJECT

Stapleford Community Pavilion "OP5"
Hickings Lane Recreation Ground
Hickings Ln, Stapleford,
Nottingham NG9 8PJ

First Floor GA Plan

DRAWN BY: KR/OS DATE: 08.06.2023
CHECKED BY: REM SCALE: As indicated @ A1

Work in Progress

PROJ - ORIGIN - ZONE - LEVEL - TYPE - ROLE - NUMBER STATUS REV
SCP - LFA - ZZ - 01 - DR - A - 0201 \$5 P11

